

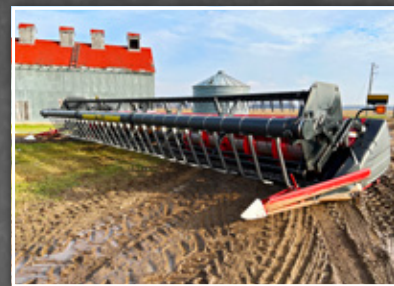
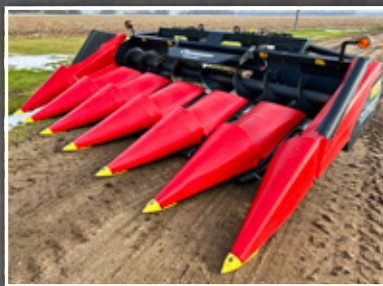
AUCTION

TIMED ONLINE

Farm Retirement

OPENS: Thursday, March 3
CLOSES: THURSDAY, MARCH 10 | 7PM CST 2022

16345 67th St SE, Walcott, ND 58077.
 From Colfax, ND, 6 miles west on County Road 4, 2 miles south on 163rd Ave SE, 1/2 mile east on 67th St SE.



PREVIEW: By appointment. Contact Mark, 701.640.4755

LOADOUT: All items to be removed within two weeks of auction. Contact Mark, 701.640.4755

4WD & 2WD TRACTORS & LOADER

2009 Case-IH 335 Steiger, 4WD, premium leather, heated seats, powershift, 4 hyd., return flow, power beyond, 3 pt., quick hitch, large 1000 PTO, integrated auto steer, decelerator pedal, 480/80R46 duals, 3,869 hrs., S/NZ9F113800

1988 Case-IH 7120, powershift, 3 hyd., return flow, 3 pt. w/quick hitch, 540/1000 PTO, diff lock, w/Leon 808 loader, 8' quick tach bucket, 42" loader forks, loader joystick, 18.4-42 hub duals, 5,557 hrs., tractor S/NJJA0004561, bucket S/N1274105

GPS EQUIPMENT

Trimble FM-1000 monitor, RTX, w/globe

HARVEST EQUIPMENT

2001 Case-IH 2388, axial flow, PRWA, std. cab, buddy seat, AHH, 3 spd. rotor, reverser, dual shaft spreader, chopper, Crary Big Top hopper ext., grain scan monitor, Pro 600 display, small & large wire concaves, sunflower wheel, keystock grates, 18.4-42 hub duals, 18.4-26 rear tires, 3,687 sep. hrs., 4,948 engine hrs., S/NJJC0269174

2009 Geringhoff RB600 Rota Disc corn head, 6x30", poly snouts, hookups for Case-IH 2388, S/N902609630

2003 Case-IH 1020 flex head, 30", hyd. fore/aft, finger reel, low dam, Crary CWS air bar, crop dividers, Case-IH 2388 hookups, S/NJJC033124

Case-IH 1010 sunflower head, 25', 12" pans, sunflower reel, S/NJJC0078826

Case-IH 810 pickup head, 10', 7-belt, wind suppressor, S/NX70479X

GRAIN CART

Unverferth 7000 grain cart, 14" corner folding auger, large 1000 PTO, roll tarp, 24.5-32 tires, S/NB624105

DRILL & PLANTER

IHC 620 press drill, 20', 6-1/2" spacing, twin compartment, folding markers, rubber packing wheels, S/N0390171C009068

Case-IH 950 Cyclo air planter, 12x30", 2 pt., PTO hydro pump, rear lift assist, ground drive, Yetter trash whippers, dry fertilizer boxes, folding markers, corn/soybean/edible bean drum, S/NJJC0029380

TILLAGE EQUIPMENT

DMI Ecolo-Tiger 730 disc ripper, 7 shank, 30" spacing, twin disc rows, disc levelers, Summers 108 HD 3-bar harrow tines, 16.5L-16.1 tires, S/N525184

DMI Tiger-Mate II field cultivator, 28-1/2', 6" spacing, 3-section fold, walking tandems across, rear hitch w/hyd., front gauge wheels, 3-bar harrow, 9.5L-15 tires, S/N920529

Case-IH crumbler, 30', 3-section fold, spring gangs, rolling basket, weight kit, ext. hitch, S/NJFH0004181

IHC 496 tandem disc, 28', 9" spacing, 3-section fold, mud scrapers, 3-bar harrow, 9.5L-14 tires

John Deere chisel plow, 14', 3 pt., single section, twin spring

John Deere 3600 plow, 8x18"

FERTILIZER APPLICATOR & SPRAYER

Unverferth 310 Ripper-Stripper dry fertilizer applicator, 12x30", 3 pt., front wave coulter disc, rear rollers, w/Redball 1660 pull-behind SS commodity cart, hydro drive, roll tarp, 14.9-46 tires, S/NA51130166

Shop-built sprayer, 12x30", 3 pt., 300 gal. poly tank

ROW CROP EQUIPMENT

John Deere 400 rotary hoe, 30', 3 pt., cab saver, single bar, 2 pt. self-transport, S/N086856N

IHC 183 row crop cultivator, 12x30", 3 pt., 3-section fold, rolling shields

SEMI TRACTOR & TRUCKS

1994 Kenworth T400B tandem axle, factory day cab, L10 Cummins, 7 spd., spring ride, fixed 5th wheel, cruise, diff lock, twin aluminum tanks, quarter fenders, 3:42 ratio, 12,000 lb. front, 36,000 lb. rear, 11R22.5 tires on steel rims, 215,381 miles

1980-81 IHC S1800 twin screw, 466, automatic, 18' box w/hoist

1973 GMC 6500 tag tandem, 432 V6 gas, 5&2 spd., 18' Frontier box, plumbed for drill fill, roll tarp, box ext., spring ride front axle, air ride rear axle, 9-20 tires, shows 2,937 miles

1966 GMC single axle, 305 V6, 4&2 spd., spring ride, 13' box w/ext., Heil Hydro hoist, plumbed for drill fill, 8.25-20 tires on steel rims, 39,410 miles

HOPPER BOTTOM & OTHER TRAILERS

1995 Frontier tandem axle steel hopper bottom, 36'x96"x66", 21" hopper clearance, spring ride, roll tarp, sight glass, 285/75R24.5 tires on steel rims

Donahue trailer, 28', walking tandem axle, wood deck

GRAIN HANDLING EQUIPMENT

Burchland GSX130 drive over pit auger, 13', 3 hp., 230v, 1 phase, 205/65-10 tires, S/N914183

Hutchinson rotary grain cleaner

Neuro grain vac, PTO

Westfield TR100-61 unloading auger, 61'x10", 540 PTO, swing out hopper, hopper walker

Westfield WR80-61 loadout auger, 61'x8", 540 PTO

Westgo loadout auger, 45'x7", 540 PTO, S/NB71274

Westfield hyd. drill fill auger

Feterl jump auger, for parts, S/N10EZ94007

SCRAPER, GRADER & BLADE

Ashland 6060D pull-type scraper, 6 yd. heaped, rear hitch, 10.00-20 tires, S/N13869

Road Boss I-12 road grader, 12', 3 pt., twin angled blades, S/NR55616

Pull-type box blade, 12', 4-way, rear weight box

OTHER EQUIPMENT

Woods BW1800 batwing mower, 15', small 1000 PTO, safety chains, aircraft tires, S/N1109777

Lorenz track wacker, 12', 3 pt., S-tines, S/N1298

Leon 1700 grapple bucket, 8', 4-grapple tines

TANKS

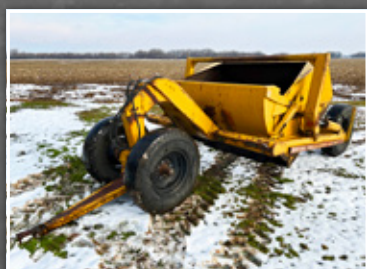
2,000 gal. fuel tank, Gasboy pump, hose w/handle

(2) 1,000 gal. fuel tanks, pumps, hoses w/handles

Mark & Noreen Fahsholz

Mark, 701.640.4755

or Justin Ruth at Steffes Group, 701.237.9173 or 701.630.5583



701.237.9173 | SteffesGroup.com

Steffes Group, Inc., 2000 Main Avenue East, West Fargo, ND 58078



TERMS: All items sold as is where is. Payment of cash or check must be made sale day before removal of items. Statements made auction day take precedence over all advertising. \$35 documentation fee applies to all titled vehicles. Titles will be mailed. Canadian buyers need a bank letter of credit to facilitate border transfer. Scott Steffes ND61, MN14-51; Brad Olstad ND319, MN14-70; Max Steffes ND999, MN14-031; Justin Ruth ND2019, MN14-041